

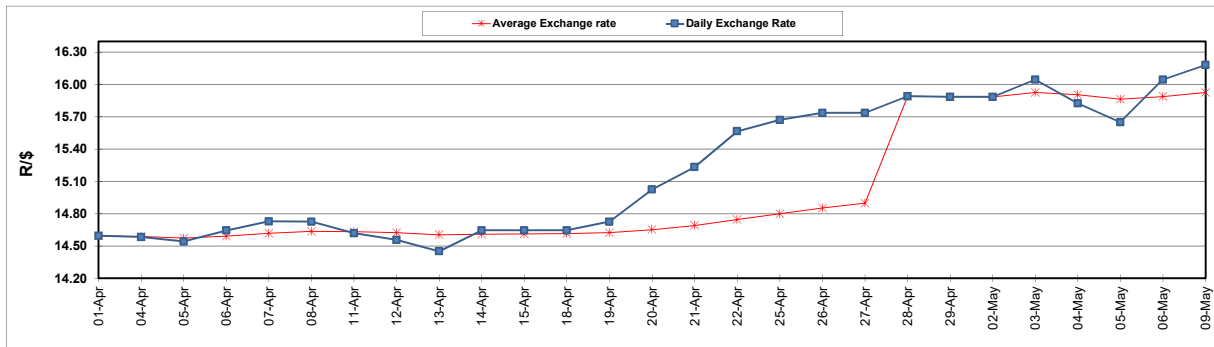
	PETROL 95 ULP	PETROL 93 ULP & LRP	DIESEL 0.05%	DIESEL 0.005%	ILL. PAR.
GAUTENG PUMP PRICE (SA c/l) AS FROM 04/05/2022	2,184.000	2,151.000	-	-	-
WHOLESALE PRICE (SA c/l) AS FROM 04/05/2022	-	-	2,199.440	2,215.840	1,664.288
SINGLE NATIONAL MAXIMUM RETAIL PRICE	-	-	-	-	2,194.000
BASIC FUEL PRICE - 09/05/2022 (SA c/l)	1,511.181	1,483.328	1,607.009	1,624.941	1,648.640
PRESS RELEASE CONTRIBUTION TO BFP 04/05/2022 - 09/05/2022 (SA c/l)	1,264.410	1,241.410	1,497.630	1,514.030	1,446.128
UNIT OVER/(UNDER) RECOVERY - 09/05/2022 (SA c/l)	(246.771)	(241.918)	(109.379)	(110.911)	(202.512)
AVERAGE BASIC FUEL PRICE 28/04/2022 - 09/05/2022	1,452.376	1,424.038	1,646.255	1,663.014	1,651.120
AVERAGE UNIT OVER/(UNDER) RECOVERY 28/04/2022 - 09/05/2022	(180.816)	(175.478)	(196.125)	(193.484)	(246.492)

ANALYSIS MOVEMENT OF AVERAGE OVER/(UNDER) RECOVERY

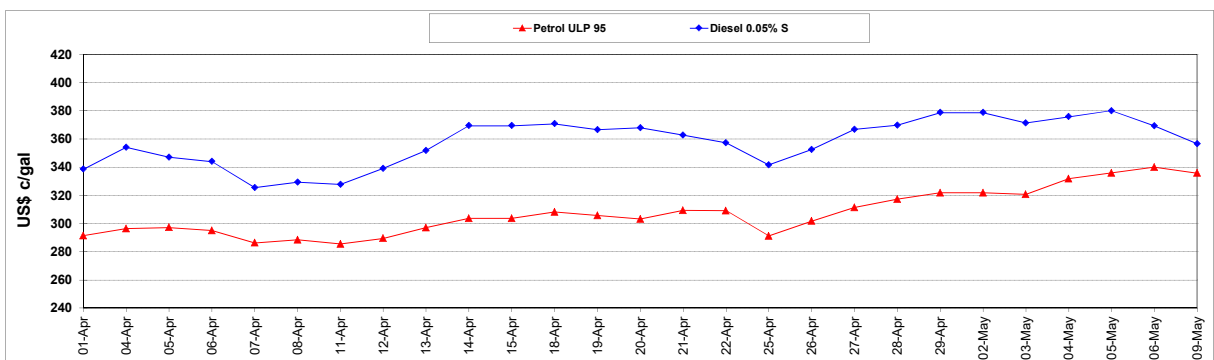
	PETROL 95	PETROL 93	DIESEL 0.05%	DIESEL 0.005%	ILL. PAR.
- MOVEMENT IN INTERNATIONAL PRODUCT PRICES	(87.223)	(83.711)	(90.038)	(86.317)	(140.091)
- MOVEMENT IN EXCHANGE RATE	(93.593)	(91.767)	(106.087)	(107.167)	(106.401)
AVERAGE UNIT OVER/(UNDER) RECOVERY 28/04/2022 - 09/05/2022	(180.816)	(175.478)	(196.125)	(193.484)	(246.492)

R/\$ EXCHANGE RATE - (R/\$16.1800 - 09/05/2022)

EXCHANGE RATE USED IN BASIC FUEL PRICE



INTERNATIONAL PRODUCT PRICES OF BASKET USED IN BASIC FUEL PRICE



BASIC FUEL PRICE IN SA CENTS PER LITRE

